

From: CCRW <ccrwjuneau@gmail.com>
Subject: **Capital City Republican Women News & Views from Alaska's Capital**
Date: April 5, 2011 9:35:20 AM AKDT
To: gingersnap@gci.net
Reply-To: ccrwjuneau@gmail.com
Return-Path: <ESC1104932630718_1102409756982_3_r20@in.constantcontact.com>
Received: from msgmta-2.gci.net ([209.165.130.16]) by mailstore-2.gci.net (Sun Java(tm) System Messaging Server 6.3-8.01 (built Dec 16 2008; 32bit)) with ESMTP id <0LJ600AK0WTKUPB0@mailstore-2.gci.net> for gingersnap@gci.net; Tue, 05 Apr 2011 09:34:32 -0800 (AKDT)
Received: from psmtm.com ([64.18.1.220]) by msgmta-2.gci.net (Sun Java System Messaging Server 6.2-3.03 (built Jun 27 2005)) with SMTP id <0LJ600J5KWUXA150@msgmta-2.gci.net> for gingersnap@gci.net (ORCPT gingersnap@gci.net); Tue, 05 Apr 2011 09:35:23 -0800 (AKDT)
Received: from coi103.confirmedcc.com ([208.75.123.103]) by exprod6mx200.postini.com ([64.18.5.10]) with SMTP; Tue, 05 Apr 2011 10:35:21 -0700 (PDT)
Received: from p2-jb509.ad.prodcc.net (p2-pen1.ad.prodcc.net [10.252.0.101]) by coi103.confirmedcc.com (Postfix) with ESMTP id 0B4C532F3D4for <gingersnap@gci.net>; Tue, 05 Apr 2011 13:35:21 -0400 (EDT)
Original-Recipient: rfc822:gingersnap@gci.net
Sender: CCRW <patsy@ccrw.ccsend.com>
Message-Id: <1104932630718.1102409756982.3.9.1311335F0@scheduler>
Mime-Version: 1.0
X-Mailer: Roving Constant Contact 2009 (http://www.constantcontact.com)
Content-Type: multipart/alternative; boundary="-----=_Part_88658736_1036204488.1302024920998"
Dkim-Signature: v=1; q=dns/txt; a=rsa-sha256; c=relaxed/relaxed; s=1000002830; d=ccrw.ccsend.com; h=to:subject:mime-version:message-id:from:date:sender:list-unsubscribe:reply-to; bh=x+OW5v3BbpbJwsztm6Tg4q9Q1ZqWUBhLv5HcncchV8=; b=LOVA69zf7Ko2JVahWo2z22Bh9Uk9m2b0hFgfU0303w/Ww6jgAW0cIkN7FxU8Uldlc0CE5Ch6aWHEvWR0zxXJdVA3CqYdOX427kE/ftPbYbZOWBXaSU9w1vTNOthDjKvYNYjVT+j43GxlC4C6vOAQ2AjK2CXcdloEN4Hcg=
X-Return-Path-Hint: ESC1104932630718_1102409756982_3_r20@in.constantcontact.com
X-Roving-Id: 1102409756982.3
X-Lumos-Senderid: 1102409756982
X-Roving-Campaignid: 1104932630718
X-Roving-Streamid: 0
X-Pstn-Neptune: 0/0/0.0/0
X-Pstn-Levels: (S: 0.08084/98.51604 CV:99.9000 FC:95.5390 LC:95.5390 R:95.9108 P:95.9108 M:94.1602 C:99.5902)
X-Pstn-Settings: 3 (1.0000:1.0000) s cv gt3 gt2 gt1 r p m c
X-Pstn-Addresses: from <ccrwjuneau@gmail.com> forward (user good) [4000/152]
List-Unsubscribe: http://visitor.constantcontact.com/do?p=un&m=0016pQjakYXOMc5832CXjWq8g%3D%3D&se=001vVRSmQB9-p4%3D&t=001qQCdo1oeA0GyRA0ebcBOoA%3D%3D&llr=wj78lwcab

Having trouble viewing this email? [Click here](#)

You're receiving this email because of your relationship with CCRW. Please [confirm](#) your continued interest in receiving email from us.

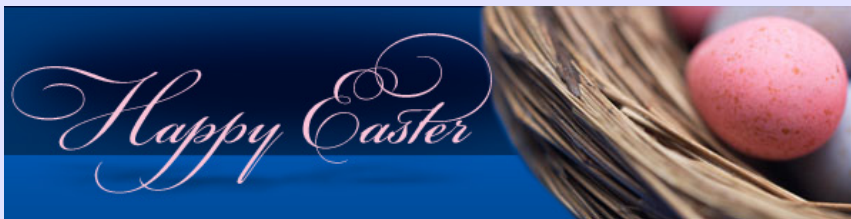
You may [unsubscribe](#) if you no longer wish to receive our emails.



Capital City
Republican Women

Juneau, Alaska

April 2011



President's Message



The Alaska State House of Representatives voted last Thursday to

"The taxpayer: That's someone who works for the federal government but doesn't have to take the civil service examination."

PRESIDENT RONALD REAGAN

In This Issue

[President's Message](#)

[Monthly Member Meeting](#)

[Garage Sale](#)

[Support Our Troops](#)

[Alaskans for Equitable Redistricting Map](#)



pass House Bill 110, Governor Parnell's oil tax reduction legislation. To show our huge thanks and appreciation, CCRW members delivered treat-filled gift bags to the 22 House members who voted for the bill and Alaska's future economic growth.

Governor Parnell still needs our help! Take a few minutes and send your message of support for HB 110 to House and Senate members at www.legis.state.ak.us/poms.

[Rep.Cathy Muñoz](#)

[Alaska Republican Registrations Rising](#)

[Senator Lisa Murkowski](#)

[Representative Don Young](#)

[Plan Ahead](#)

[Member Profile](#)

[Thank You](#)

[NFRW](#)

The Biennial Convention of the Alaska Federation of Republican Women takes place this month. The meeting will be held in Wasilla, April 29-30.

The size of our club allows us to have 12 delegates at the convention. We also may have alternates for all delegates. Our goal is to fill the delegate slots and have as many alternates as possible attend the convention.

Come join in the fun! The meeting will provide a wonderful opportunity to network with like-minded Republican women from across the state and get energized for the upcoming 2012 elections!

Please email me if you can attend. It promises to be an interesting and productive convention.

CCRW is ready to kick off our first year of participating in the State's Adopt-A-Highway program. When you drive to town look for the sign designating our area. It's located a short distance past the Egan and Vanderbilt intersection. Our second sign is installed near the intersection of Egan and Channel Drive. We are responsible for one mile of road.



The program calls for an organization to agree to pickup their section three times a year, for three years. Our first pickup will happen during Juneau's annual spring cleanup on May 7. Joining the Adopt-A-Highway effort demonstrates commitment to our community and supports the goals of the NFRW's Caring for America program.

Be sure to come our April luncheon. Marilyn Crockett, Executive Director of the Alaska Oil and Gas Association will be our speaker. She will discuss oil and gas issues and activities in Alaska. Her talk promises to be most interesting. See you there!

Ginger Johnson

Phone 364-2315

[Email](#)

MONTHLY MEMBER MEETING

CCRW meets the second Monday of every month in the Douglas Room at the Prospector Hotel downtown. Doors open at 11:45 am. The program includes a Flag Salute, introductions, reports, announcements and a guest speaker. We conclude the program by 12:50 pm. Lunch is \$15. New members are always welcome. If you know someone who might enjoy being part of our group, invite her as a guest!

Immediately after the meeting the CCRW Board meets and all members are invited to attend.

April 11 Meeting

Speaker :

*Marilyn Crockett, Executive Director
of the
Alaska Oil and Gas Association*

Plan Ahead

Would you like to attend the 36th Biennial National Federation of Republican Women convention September 29 - October 2 in Kansas City, Missouri? If so, plan to attend the state Alaska Federation of Republican Women convention in Wasilla April 29 & 30. CCRW can send twelve delegates. Please tell Ginger if you would like to be part of our Juneau delegation.

Constitutional Quiz

Must all congressional districts be the same size?

YES. For many years, however, state legislatures gave more representation to large, sparsely populated rural districts than to smaller, heavily populated urban districts. In 1962 the Supreme Court ruled that all legislative districts must be equal in population on the grounds that qualified voters were no more or less so because they lived in cities or on farms. The Supreme Court used the notion of "by the people of the several states" in Article 1 along with the Fourteenth Amendment's "equal protection clause" to require that congressional districts contain roughly the same number of people.

How does the Constitution protect the inventor of a musical instrument?

The Constitution gives Congress the right to establish copyright laws and provide patent protection for inventors and authors. Patents are not limited to entirely new inventions but can protect inventions that perfect existing items. Thus, for example, in 1849 Charles Christian was granted a patent for a new form of flute that would improve the tone of the instrument

CCRW Officers

President - Ginger Johnson

Annual Garage Sale May 21

One of the easiest ways you can help CCRW raise funds for our candidates and projects is by contributing items to our annual spring garage sale. So please start rummaging through your cabinets, closets, attics and garages NOW for things you no longer want or need.



Our goal this year to get participation from at least 50% of our membership. We know if everyone starts loading up a box or shopping bag this week, by May 20 when we are setting up, we'll have a great selection of great buys for those who come to see what we have to offer.

We also need women willing to help set up Friday after work and work the garage sale Saturday morning as well. Remember, for our annual garage sale, we do not accept clothing but we are willing to collect your items in advance so we know what we can advertise ahead of time.

1st Vice President - Stephanie Madsen
2nd Vice President - Lorene Palmer
Secretary - Kelly Shattuck
Correspondence
Rita Jensen & Peggy Petropulos
Treasurer - Joyce Vick
Asst. Treasurer - Paulette Simpson

Calendar

April 11, Monday

CCRW monthly meeting - Prospector
11:45 (doors open) - 1 p.m.
\$15 for lunch

April 25, Monday

CCR Trunk & Tusk - Baranof
12:00 - 1 p.m.
\$15.00 for Lunch

April 29 - 30

AFRW 2011 Biennial Convention
Wasilla

May 9, Monday

CCRW monthly meeting - Prospector
11:45 (doors open) - 1 p.m.
\$15 for lunch

May 21, Saturday

Garage Sale

July 29, Friday

Summer Social Salmon Bake

August Cruise Ship Luncheon



CCRW Adopt A Troop Project



Imagine being outside with the sun beating down on you...sounds wonderful, doesn't it ?



This photo was taken in Virginia Beach right after Brandon did a halo jump @ 20,000 thousand feet. Wife Samantha and son Luke were there to watch and greet Dad after he landed.

It's not so pleasant if you're wearing full fatigues and carrying heavy gear in a sandstorm. That's what our adopted troop of Navy Seals are experiencing every day in Afghanistan to protect our freedom. One of the young men serving in the unit is Brandon Stone from Juneau. His family has given us a list of items he and his fellow Seals would love to receive.

So here's what you can do to show we care about our troops and help boost their morale:

Attend our monthly meeting on April 11th at the Prospector and take a pre-addressed, Priority Mail flat rate box to fill with the items requested (below), then mail. Or, if it's easier, drop a few dollars in the adopt-a-troop jar at the meeting and Gale Vantor will package and ship on your behalf.

In the past we have sent dozens of packages off to our men and

women in Iraq and Afghanistan and the feedback we received was overwhelmingly positive and appreciative of our efforts.

If you can't make the meeting, but want to participate, contact Renda Heimbigner at 723-4202.

2009-2011 AFRW Officers

President - Alice Massie, Wasilla
VP 1st Judicial District - Connie McKenzie, Juneau
VP 2nd Judicial District - Robin Phillips, Anchorage
VP 3rd Judicial District - Myrna Maynard, Anchorage
VP 4th Judicial District - Rhonda Boyles, Fairbanks
Treasurer - Pat Purcell, Wasilla
Assistant Treasurer - Kai Binkley Sims, Anchorage
Secretary - Lureen Stedman, Sitka
Assistant Secretary - Vonna Husby, Fairbanks

Quick Links

For additional reading on interesting and timely topics, check out the following links:

[AFRW](#)

- sunscreen lotion
- lip balm
- dried fruit
- Heritage ground coffee
- canned or vacuum-packed smoked salmon
- chocolate espresso beans

Redistricting Information

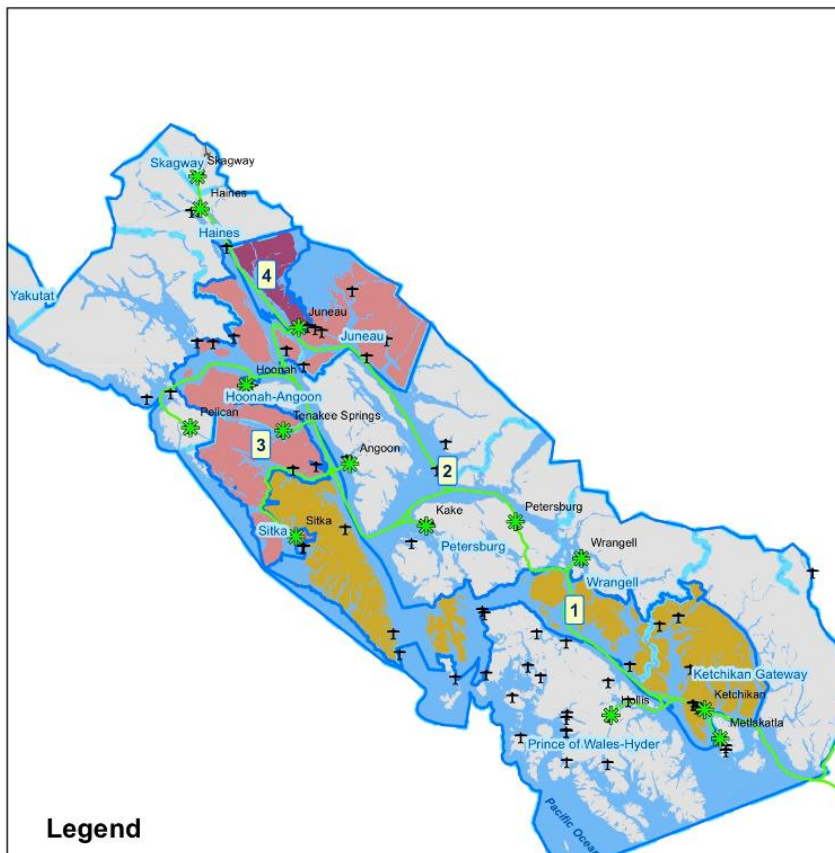
On March 15, 2011, the Alaska Redistricting Board received its 2010 Census redistricting data from the U.S. Census Bureau. That data has been posted at <http://www.akredistricting.org/data>. According to Article VI of the Alaska Constitution, the Board must release a proposed redistricting plan or plans within 30 days of receipt of the census data.

To assist the Board in its work, the public is invited to submit comments on the data and proposed redistricting plans via:

- Email (info@akredistricting.org)
- Mail (411 West Fourth Avenue, Suite 302, Anchorage, AK 99501)
- Fax (907-269-6691)

Alaskans for Fair & Equitable Redistricting" (AFFER) have come up with a plan for Southeast.

Below is the map and the information about the suggested "new" districts.



[NFRW](#) - To Access Member Center.

The username is federation

The password is nfrw1938

[Rep. Cathy Muñoz](#)

[U.S. Sen. Lisa Murkowski](#)

[U.S. Rep. Don Young](#)

[Capital City Republicans](#)

[Governor Sean Parnell](#)

[Alaska Republican Party](#)

[Politico](#)

[Smart Girl Politics](#)

[AK Voices: Paulette Simpson](#) Anchorage

Daily News online section for guest opinion bloggers.


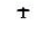


[Alaska Standard](#)

March Monthly Member Meeting



CCRW president Ginger Johnson presents Senators Linda Menard and Cathy Giessel with Juneau prints at conclusion of March meeting.



-  ferry_port
-  airport_runway_pt
-  marine_highway
-  Plan Boundary Line
-  Rail Roads

1. The 2010 population changes reduce Southeast to 4 ideal population house seats when the area west of Mount Elias is used in another district.
2. The major objective for Alaskans for Equitable Redistricting was to protect the Native Voting Rights District in South East Alaska.
3. The Native Influence District 5 was 3900 people short in its present configuration with 36.6% Alaska Natives.
4. When Cordova and the PWS villages are reassignment to the north, D 5 is over 6,000 short.
5. By adding the POW villages from D1, Wrangell, Petersburg and several small villages from District 2 and removing Gustavus and Tenakee Springs from D5, AFER builds a new District 2 that is 2.1% under populated with a 32.55% Alaska Native Percentage.
6. The new D2 is a new version of the traditional SE ice worm district as the map shows.
7. The Juneau House Seats are closest to ideal size.
8. The Alaskans for Equitable Redistricting plan simply brings District 4 to ideal population by adding the Juneau Airport Precinct and part of the Switzer Precinct. This is a very compact district.
9. District 3 starts 4200 under populated based on the above action. The addition of Gustavus, Tenakee Springs, Halibut Point and Sitka #2 precincts creates a deviation of +2.07%. The district is created to reduce the non native content in new District 2.
10. District 1 acquires its required population from the Sawmill and Sitka #1 precincts in old District 2 and minor populations along the route from Sitka to Ketchikan. District 1 is 3.19% over populated. Fine tuning between D 1, D3 and D4 can reduce this deviation.
11. The villages south of the Sitka to Juneau corridor & inside of the Sitka to Ketchikan corridor are connected via water to the west for Sitka to POW, Metlakatla, Hyder and Wrangell.

Member Profile

KATE MICKELSON



I made my first trip to Alaska as part of a family vacation in 1997. We spent a couple of weeks on a land tour and ended with a cruise visiting ports in Southeast. That's all it took - this "buckeye" sprouted into an Alaskan.

Several summers later, I returned to Alaska to complete the second of my college internships with the City and Borough of Juneau's Engineering Department. I met my husband Norman while we were both working on the construction of the Treadwell Arena.

I hold degrees in Engineering and Science, Civil Engineering and Construction Management, and am pursuing a Masters in Public Administration at the University of Alaska Southeast. I work as a full-time Staff Engineer at PND Engineers, Inc., a local engineering consulting firm specializing in marine engineering. I'm fortunate to have my younger brother, Brandon work alongside me. I am a Past-President of the Juneau Branch of the American Society of Civil Engineers, am a yearly Engineers Week committee member, and was the Alaska Capital Engineers newsletter editor for several years. This month, I will travel to Washington D.C. to participate in the ASCE Legislative Fly-In to discuss infrastructure issues affecting Alaskans.

During our free time, Norman and I look forward to our daily Dredge Lakes walk with our 3-year old black Lab, Jetta. I enroll in nearly every community arts class I can fit in my schedule. I'm currently learning stained glass through the Juneau Community Schools and am eagerly anticipating another hand-built pottery class at the Canvas with my girlfriends in April. In the summers I love to fish and forage - on any given day, you'll find me pickling beach asparagus, canning fireweed honey, or hunting for the elusive nagoonberries. I also stay busy with



Rep. Cathy Muñoz

As we come into the final days of the 27th Alaska Legislature, we are making progress on the two biggest issues of the first session: HB 110, oil tax reform, and the Coastal Zone Management legislation. HB 110 passed the House on a 22 to 16 vote, with two members absent, after 26 hearings on the bill. In my view, the House has worked tremendously hard on this issue, and is now looking to the Senate to press forward on this critical legislation. HB 110 aims to restore investment in Alaska, and address our state's stunning decline in oil production.

The House's work on Coastal Zone Management bill was concluded today in House Resources where several amendments were adopted into a new Committee Substitute bill. They include the establishment of a board to review and recommend on coastal district plans and enforceable policies. The current version keeps the ACMP program and project review in the Department of Department of Natural Resources. DNR retains final oversight and regulatory authority.

As you are probably aware, the Alaska Redistricting Board will adopt a preliminary plan (or plans) in about ten days. The group "Alaskans for Fair & Equitable Redistricting" (AFFER) has submitted a Plan that many Republicans are supporting in their testimony to the Alaska Redistricting Board. Please take time to review the proposed redistricting plans, the public hearing schedule and opportunities to comment - all available online at the website: akredistricting.org.

Special thanks to Ginger and CCRW members for the beautiful gift bags that 22 legislators received after the oil tax vote. The kindness was greatly appreciated.

Cathy Muñoz

Alaska Republican Registrations Rising While Democrats Decline

Since October 2008, Alaska Republican voter registration has grown by 6,752. In the same time frame, Democrats have lost 920. And according to a recent AP story published March 30, the Division of Elections reports that there are about 2,200 fewer Democrats now than there were in March 2010 and about 1,100 fewer Libertarians.

Former RNC Chairman Ed Gillespie once noted that, "As the Democrat Party gets smaller, it becomes increasingly more liberal, elitist and angry, and as it becomes increasingly more liberal, elitist and angry, it gets smaller."

National News

Senator Lisa Murkowski

On March 12, Alaska Senator Lisa Murkowski, the ranking member on the Senate Energy and Natural Resources Committee, delivered the weekly Republican radio address. Excerpts from her remarks are printed below.

"I want to speak with you today about one of the threats that we're experiencing personally, rising energy prices. And, I want to share some of the steps that Republicans are ready to take right now - steps that will protect America from international conflicts, create thousands of new jobs, reduce our budget deficit, and help bring energy prices back down to Earth.

"When gasoline prices go up, families and businesses are stretched thin. Budgets are harder to balance and jobs are destroyed. If energy prices keep climbing, our nation could slip back into recession - just as we're finally emerging from the last one.

renovation projects around our house.

I am currently the co-chair of the special events and fundraising committee and appreciate the opportunity to be more involved with CCRW. I enjoy the interaction with so many like-minded women that this wonderful organization affords me.



Dear Juneau Republican Women,

How delightful to return to my office after chairing the Fish Caucus to find a delicious bagful of home-baked cookies!

Thank you so much for taking the time to bake the cookies and for presenting them to me and my staff. We are all very appreciative and know who to call if the scale reads "overweight" by the end of the week. (Wink, wink).

Thanks you again. It was a wonderful gesture and much appreciated.

With genuine thanks,

Representative Steve Thompson & Staff

Dear Shirley & CCRW,

Thank you so much for the delicious treats you brought to the office. My staff and I had to do a little more walking around to walk off the weight.

Thank you and the Capital Republican Women for all your support and hard work.

Representative Lance Pruitt

Dear Shirley & CCRW,

What a kind gesture for you and the Capital city Republican Women to present such a delicious dessert tray to me and my staff today!

As a "Republican Woman" myself (Anchorage Club, associate member). I have some appreciation of how important a role you play in electing Republicans. Now, I know you are just as good at keeping us well-fed and happy!

Thanks so much for your kindness and please

"The worst part of this emerging crisis is that our own government deserves much of the blame. International events have pushed prices higher, but our own short-sightedness and restrictions have also played a critical role.

"America now imports 11 million barrels of oil every day. Last year alone, we spent more than \$330 billion on foreign oil, much of it in countries that are not our friends.

"We don't import oil because our domestic reserves are exhausted. Not even close. Since 1919, people have claimed that America is 'running out of oil.' It might surprise you that we're still the world's third-largest oil producer, and seem to find more whenever we actually look.

"Republicans know that it's past time to produce more of America's oil. My home state of Alaska alone has estimated resources in excess of 65 years' worth of Persian Gulf imports.

"It's also time to shelve the bad ideas. Democrats have repeatedly sought to increase taxes and fees while slowing the permitting process. That won't solve any problems, but it will mean less production, more imports, and higher prices. To boost production, we need to cut red tape and streamline regulations.

"Both supply and demand affect oil prices, and that's why Republicans support both new production and alternatives to reduce consumption. But we're also thinking about what comes next, and we're committed to making progress on cleaner energy - that's just not our only goal. We also want energy to be affordable, abundant, diverse, and domestic."

Representative Don Young

[Representative Don Young Urges Producing American Energy & Opening ANWR](#)



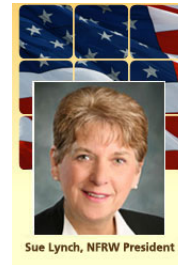
Editor - Paulette Simpson

Layout - Patsy DeWitt

*Paid for by Capital City Republican Women
P.O. Box 22195 JUNEAU ALASKA 99802*

convey my thanks to the entire organization.

Sincerely,
Dan Saddler



National Federation of
Republican Women



You can read the latest issue of
Republican Woman
Online at [NFRW](#)
Click on "member Center"
The username is federation
The password is nfrw1938

[Forward email](#)



This email was sent to gingersnap@gci.net by ccrwjuneau@gmail.com |
[Update Profile/Email Address](#) | Instant removal with [SafeUnsubscribe™](#) | [Privacy Policy](#).

CCRW | PO BOX 22195 | Juneau | AK | 99802

